

126.4 – Clearance 121.9 – Ground 119.7 – Inner Twr 119.1 – Outer Twr

ARRIVAL:

- Initial Contact – **119.1** and advise intentions (Full Stop, T/G or CCTS)
- After receiving Arrival Route, descend and maintain 2000'
- Contact **119.7** at the arrival point ★ for approach instructions
- After landing, exit runway, cross hold line, stop and contact **121.9**
- < 1 hour stop, ask **121.9** for code to be recycled

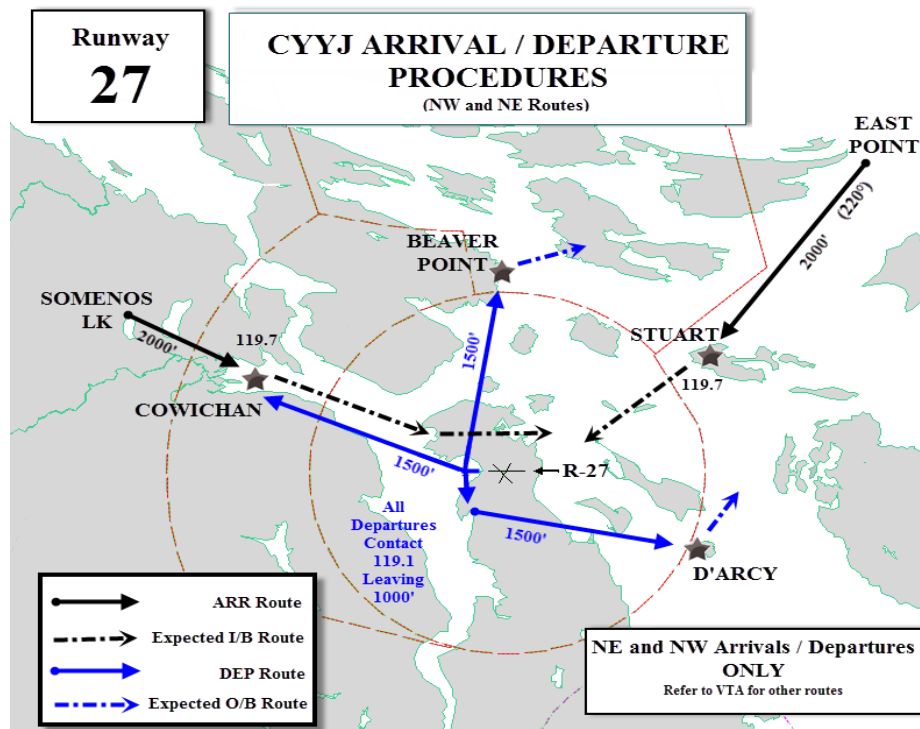
DEPARTURE:

- Obtain VFR Code – Recycled or new (KA FIC)
- **126.4** – Advise destination or initial departure direction
- **121.9** – Advise position on field and ready for taxi
- **119.7** – Advise ready for departure when run-up complete

DEPARTURE or TOUCH/GO:

- Fly the assigned departure route ★
- Contact **119.1** leaving 1000' for enroute instructions
- **Do Not climb above 1500'** until cleared higher

**** If unsure or unfamiliar, advise ATC immediately ****



126.4 – Clearance 121.9 – Ground 119.7 – Inner Twr 119.1 – Outer Twr

ARRIVAL:

- Initial Contact – **119.1** and advise intentions (Full Stop, T/G or CCTS)
- After receiving Arrival Route, descend and maintain 2000'
- Contact **119.7** at the arrival point ★ for approach instructions
- After landing, exit runway, cross hold line, stop and contact **121.9**
- < 1 hour stop, ask **121.9** for code to be recycled

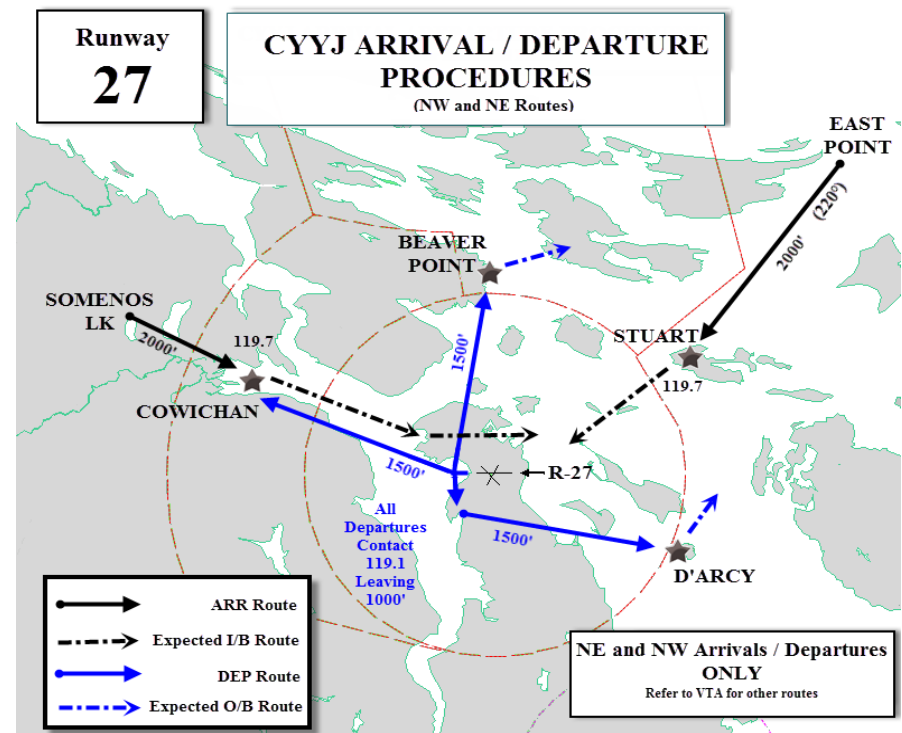
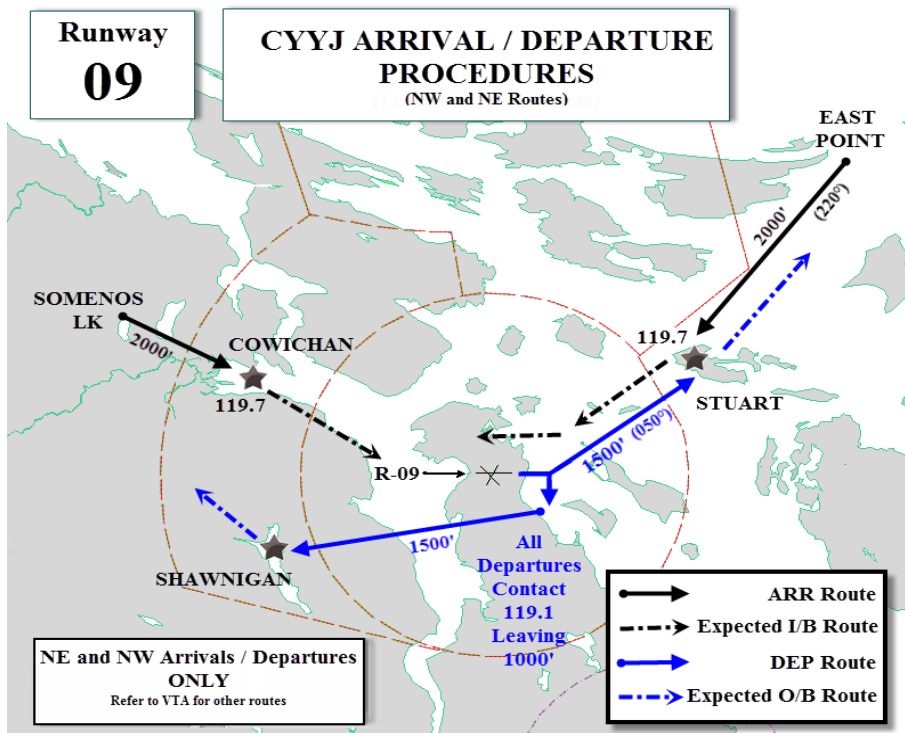
DEPARTURE:

- Obtain VFR Code – Recycled or new (KA FIC)
- **126.4** – Advise destination or initial departure direction
- **121.9** – Advise position on field and ready for taxi
- **119.7** – Advise ready for departure when run-up complete

DEPARTURE or TOUCH/GO:

- Fly the assigned departure route ★
- Contact **119.1** leaving 1000' for enroute instructions
- **Do Not climb above 1500'** until cleared higher

**** If unsure or unfamiliar, advise ATC immediately ****



126.4 – Clearance **121.9** – Ground **119.7** – Inner Twr **119.1** – Outer Twr

ARRIVAL:

- Initial Contact – **119.1** and advise intentions (Full Stop, T/G or CCTS)
- After receiving Arrival Route, descend and maintain 2000'
- Contact **119.7** at the arrival point ★ for approach instructions
- After landing, exit runway, cross hold line, stop and contact **121.9**
- < 1 hour stop, ask 121.9 for code to be recycled

DEPARTURE:

- Obtain VFR Code – Recycled or new (KA FIC)
- **126.4** – Advise destination or initial departure direction
- **121.9** – Advise position on field and request taxi instructions
- **119.7** – Advise ready for departure when run-up complete

DEPARTURE or TOUCH/GO:

- Fly the assigned departure route ★
- Contact **119.1** leaving 1000' for enroute instructions
- **Do Not climb above 1500'** until cleared higher

**** If unsure or unfamiliar, advise ATC immediately ****

126.4 – Clearance **121.9** – Ground **119.7** – Inner Twr **119.1** – Outer Twr

ARRIVAL:

- Initial Contact – **119.1** and advise intentions (Full Stop, T/G or CCTS)
- After receiving Arrival Route, descend and maintain 2000'
- Contact **119.7** at the arrival point ★ for approach instructions
- After landing, exit runway, cross hold line, stop and contact **121.9**
- < 1 hour stop, ask 121.9 for code to be recycled

DEPARTURE:

- Obtain VFR Code – Recycled or new (KA FIC)
- **126.4** – Advise destination or initial departure direction
- **121.9** – Advise position on field and ready for taxi
- **119.7** – Advise ready for departure when run-up complete

DEPARTURE or TOUCH/GO:

- Fly the assigned departure route ★
- Contact **119.1** leaving 1000' for enroute instructions
- **Do Not climb above 1500'** until cleared higher

**** If unsure or unfamiliar, advise ATC immediately ****